

# ADVANCED CABINET

Advanced cabinets are expertly constructed using 18mm white carcass manufactured to the highest standards providing reassurance of the durability and reliability of Regency's kitchens.

Advanced cabinets have colour co-ordinated ABS edging, soft closing hinges and drawers. Drawer inserts and solid wood drawers are available.



**REGENCY**  
kitchens of distinction

## Wall Cabinet



## Base Cabinet

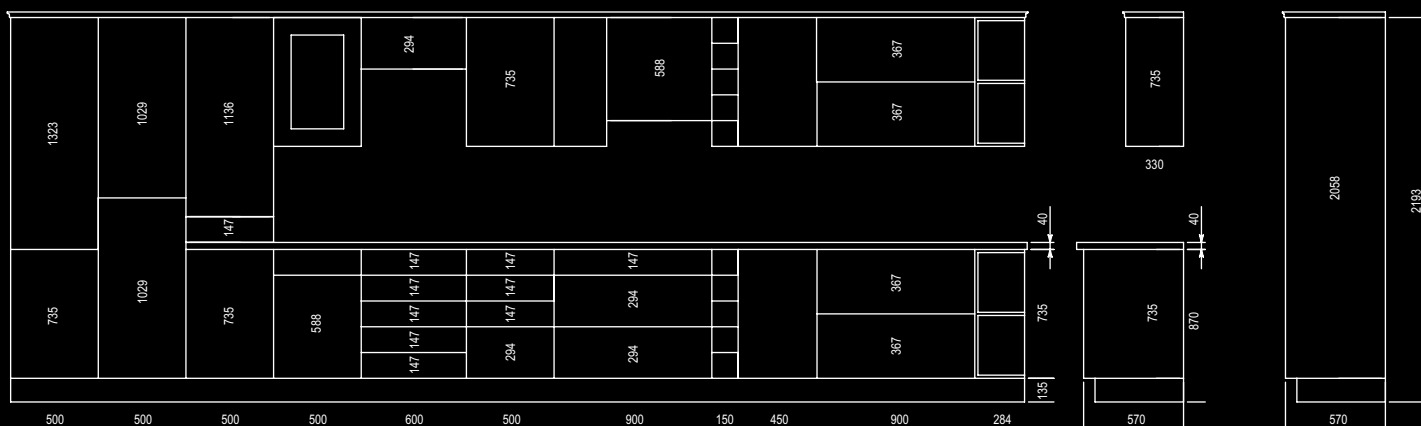
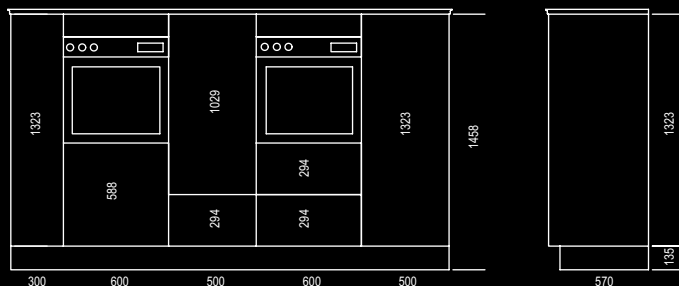


Key	Area	Specification
-	<b>Cabinets</b>	Each cabinet is expertly constructed using 18mm rigid carcass and is manufactured to EN 312-2:2003 from fine surface chipboard type P2 faced in 80 g/m <sup>2</sup> melamine, to comply with the requirements of BS EN 14322:2003. All exposed edges are lipped with melamine and bonded with hot melt adhesive tested to conform to BS 6222 part 3:1999 for surface finish. This provides greater strength and prevents water ingress.
-	<b>Carcass finish</b>	All carcass front edges are finished with durable colour co-ordinated environmentally friendly ABS* 2mm edging. This gives a smooth finish providing a superior looking kitchen. *ABS [Acrylonitrile Butadiene Styrene].
-	<b>Unit backs</b>	All cabinets have fixed 15mm solid full height MFC backs.
-	<b>Service gap</b>	There is a 12mm service gap behind all wall units and 48mm service gap behind all base units – for hiding plumbing and pipe work and providing easy access after installation.
-	<b>Shelves</b>	Adjustable shelves with 3 height levels. A central support is provided in double units. Shelf clips secure the shelf in position.
-	<b>Depth</b>	All base units are 570mm deep and all wall units are 330mm deep.
1	<b>Hanging brackets</b>	Metal hanging brackets are manufactured from corrosion-resistant zinc-plated steel to BS 1706:1990, concealed using silver steel cover caps. The bracket is fully adjustable and provides easy levelling whilst installing. The metal wall hanging plate is zinc plated with a 5mm crank.
-	<b>Legs</b>	Legs are constructed from high pressure Polystyrene. They are height adjustable by 35mm.

Key	Area	Specification
2	<b>Plinths</b>	All plinths are 135mm high, are made from MFC and are removable allowing access under cupboards. An optional plinth return is available.
3	<b>Drawer system</b>	The drawer system contains stainless steel drawer box and sides with silver grey powder-coated surface finish. The base is 16mm MFC with optimal runner action and can hold up to 50kg in weight. It runs on a full extension steel drawer runner with steel bearings and the integrated damping device closes the drawer softly and silently.
4	<b>Wooden drawer box</b>	Solid wooden drawer boxes are available as an upgrade. The solid wooden sides and 16mm MFC base run on a full extension steel drawer runner with steel bearings. The drawer is fully adjustable for drawer front alignment. The integrated damping device closes the drawer softly and silently.
5	<b>Drawer organisers</b>	A wide range of drawer organisers is available to help keep drawer contents tidy and secure including plastic cutlery trays, utensil inserts, steel cutlery inserts and wooden/stainless steel inserts.
6	<b>Hinges</b>	Three types of hinges are used 110° for main units, 170° for corner wall and base units and 135° for angled wall unit. All hinges are clip-on, nickel-plated steel, straight arm, 3 way adjustable and tested to BS 6222: 1997 part 2 level h. The integrated silent soft-close system provides wide opening aperture and the ability to remove the doors for cleaning or to replace. The cushion effect can be adjusted.
7	<b>Door buffers</b>	All fascias are drilled and a high quality door buffer inserted to reduce severity of impact between fascia and carcass.

Manufactured to the highest standards

# ADVANCED CABINET



## Unit elevation



FSC Trademark © 1996 Forest Stewardship Council A.C. TT-COC-002295



4165QMS001



BS 6222-2:1997 KM 59287



**REGENCY**  
kitchens of distinction