

PREMIUM CABINET

Premium cabinets are expertly constructed using 18mm white carcass manufactured to the highest standards providing reassurance of the durability and reliability of Regency's kitchens.

Premium cabinets have colour co-ordinated edging, stop and self-close drawers and fully adjustable hanging brackets.

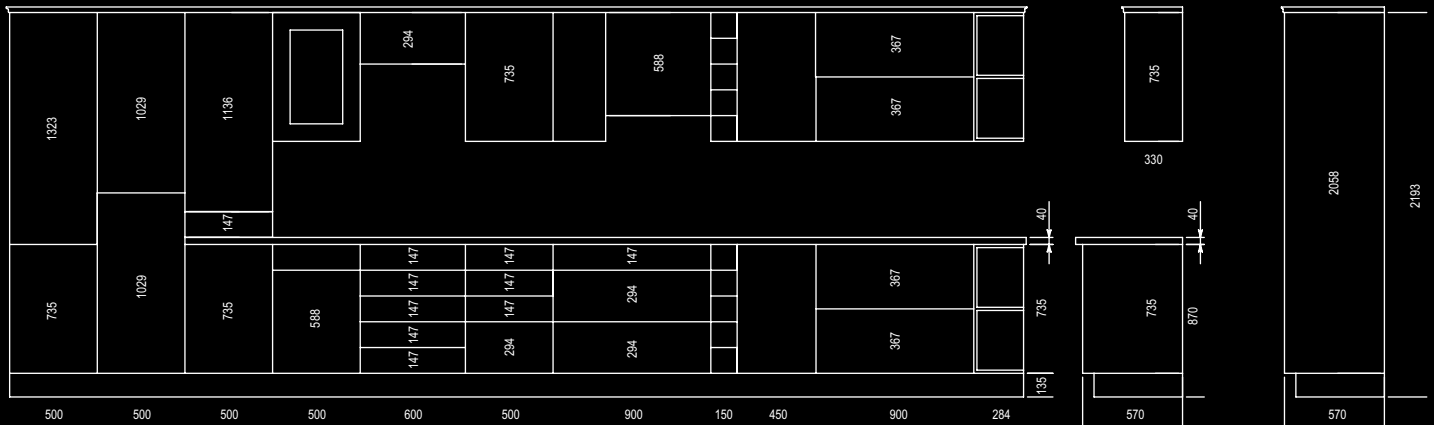
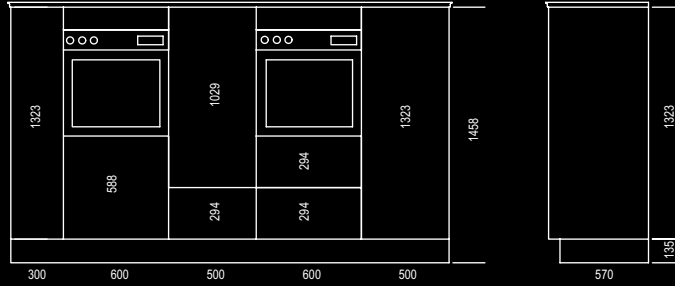


Key	Area	Specification
-	Cabinets	Each cabinet is expertly constructed using 18mm rigid carcass and is manufactured to EN 312-2:2003 from fine surface chipboard type P2 faced in 80 g/m ² melamine, to comply with the requirements of BS EN 14322:2003. All exposed edges are lipped with melamine and bonded with hot melt adhesive tested to conform to BS 6222 part 3:1999 for surface finish. This provides greater strength and prevents water ingress.
-	Unit backs	All cabinets have fixed 15mm solid full height MFC backs.
-	Carcass finish	Carcass edges are finished with colour co-ordinated 0.4mm paper edging creating a smooth finish.
-	Service gap	There is a 12mm service gap behind all wall units and 48mm service gap behind all base units – for hiding plumbing and pipe work and providing easy access after installation.
-	Shelves	Adjustable shelves with 3 height levels. A central support is provided in double units. Shelf clips secure the shelf in position.

Key	Area	Specification
-	Depth	All base units are 570mm deep and all wall units are 330mm deep.
1	Hanging brackets and plates	Hanging brackets have a fully adjustable metal hanging arm manufactured from corrosion resistant zinc-plated steel to BS 1706:1990 and contained within a reinforced plastic body. The metal wall hanging plate is zinc plated with a 5mm crank.
-	Legs	Legs are constructed from high pressure Polystyrene. They are height adjustable by 35mm.
2	Plinth	All plinths are 135mm high, are made from MFC and are removable allowing access under cupboards. An optional plinth return is available.
3	Drawer system	The drawer system contains epoxy-coated metal drawer box with metal sides and a 15mm MFC base and back. The metal fascia mounting brackets are fully adjustable with metal runners, nylon rollers and integrated stop and self-closing action. This drawer can hold up to 25kg in weight.
4	Hinges	110° and 170° clip on, straight arm, 3 way adjustable, nickel-plated hinges provide wide open aperture and the ability to remove the doors for cleaning or to replace.

Expertly constructed

PREMIUM CABINET



Unit elevation



FSC Trademark © 1996 Forest Stewardship Council A.C. TT-COC-002295



4165QMS001



BS 6222-2:1997 KM 59287

